

# Regional Support Groups for the Loss of a Child or Infant

Support groups led by people who understand what you are going through may help you recover from your loss and feel hopeful about your ability to rebuild your life. For national support groups, please refer to booklets in this packet.

## Los Angeles/San Fernando Valley

### Mattel Children's Hospital UCLA Comforting Hearts Family Bereavement Group

(Adults and children services for when a child dies)

(310) 825-0731

[uclahealth.org/cccp](http://uclahealth.org/cccp)

### GriefHaven — Parent Grief Support Group

(Adults and children services for when a child dies)

(310) 459-1789

[griefHaven.org](http://griefHaven.org)

### Our House Grief Support Center — Variety of Support Groups

(310) 473-1511

[ourhouse-grief.org](http://ourhouse-grief.org)

### MISS Foundation — Parents Grief Support Group

(Adults and children services for when a child dies)

(602) 279-6477 or (888) 455-MISS (6477)

[la.missfoundation.org](http://la.missfoundation.org)

### Compassionate Friends

(Adults and children services for when a child dies)

L.A. Chapter: (310) 474-3407

South L.A.: (323) 546-9755

Verdugo Hills: (818) 236-3635

Spanish-Speaking Group: (323) 606-8084

Woodland Hills: (888) 272-5708

San Gabriel Valley: (626) 919-7206

[thecompassionatefriends.org](http://thecompassionatefriends.org)

### Hospice of the Conejo

(Variety of bereavement support groups, including Spanish speaking)

80 East Hillcrest Drive, Suite 204,

Thousand Oaks, CA 91360

(805) 495-2145

### Little Angels of White Memorial Support Group

(Monthly support groups in both English and Spanish for miscarriage, stillbirth or infant loss)

White Memorial Medical Center, Adventist Health

1720 Cesar Chavez Ave, Los Angeles, CA 90033

(562) 682-9631

### Los Angeles County Grief Healing Peer-Parent Support Group

(A monthly support group for parents who live with fetal and infant loss)

600 S. Commonwealth Ave., Suite 800,

Los Angeles, CA, 90005

Christina Thiele: (707) 849-5347

[christina23thiele@gmail.com](mailto:christina23thiele@gmail.com)

Myia Slaughter: (323) 965-7053

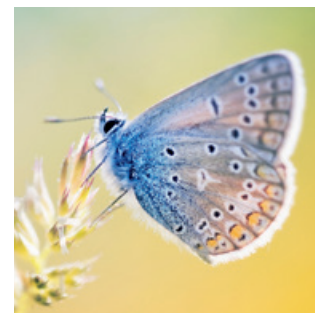
[myslaughter84@gmail.com](mailto:myslaughter84@gmail.com)

### Sharing to Heal Early Loss

Providence Tarzana

Medical Center

(818) 609-2264



## Orange County

### Gary's Place for Kids Support Groups

(Adults and children services)

Contact: Adele Canzano (949) 348-0548

[gpfk.org](http://gpfk.org)

### The Compassionate Friends

(Adults and children services for when a child dies)

Contact: Roy Redman (714) 993-6708

Irvine Chapter (714) 504-7042

[thecompassionatefriendsoc.com](http://thecompassionatefriendsoc.com)

### Fairhaven Memorial Park & Mortuary

Contact: Carol Sexton or Ruth Velez (714) 633-1442

[fairhavenflowers.com/library/grief\\_support](http://fairhavenflowers.com/library/grief_support)

### Crystal Cathedral Support Group

(Christian-based group in Orange County)

(714) 750-9237

### Children's Hospital of Orange County Bereavement Support Groups

(For families who have lost a child, in Spanish and English)

(714) 509-8521

## Long Beach/South Bay

### Mattel Children's Hospital UCLA Comforting Hearts Family Bereavement Group

(Adults and children services for when a child dies)

(310) 825-0731

[uclahealth.org/cccp](http://uclahealth.org/cccp)

### The Compassionate Friends: South Bay/LA Chapter Support Groups

(Adults and children services for when a child dies)

(310) 963-4646

[info@tcfsbla.org](mailto:info@tcfsbla.org)

[thecompassionatefriends.org](http://thecompassionatefriends.org)

### The Gathering Place — Support Groups

5315 Torrance Blvd. Suite B-1, Torrance, CA 90503

(310) 546-6407

[Gathering.Place@providence.org](mailto:Gathering.Place@providence.org)

### New Hope Grief Community in Long Beach — Support Groups

(Adults and children services)

(562) 429-0075 or (888) 490-HOPE

[newhopegrief.org](http://newhopegrief.org)



### Pathways Volunteer Hospice

3701 Michelson St., Lakewood, CA 90713

(562) 531-3031

[pathwayshospice.org](http://pathwayshospice.org)

## Riverside/Inland Empire

### The Compassionate Friends: Inland Empire Chapter Support Groups

(Adults and children services for when a child dies)

Contact: Kristan (951) 265-3820

[tcf1114@gmail.com](mailto:tcf1114@gmail.com)

[thecompassionatefriends.org](http://thecompassionatefriends.org)

### Empty Cradle (Infant and pregnancy loss) — Support Groups

(Adults and children services for when a child dies)

(619) 595-3887

[support@emptycradle.org](mailto:support@emptycradle.org)

[emptycradle.org](http://emptycradle.org)

### San Diego North Inland Chapter of Bereaved Parents of the USA

(Adults and children services for when a child dies)

Contact: Kathleen (619) 994-3010

[bpsdni.bpchapter.org](http://bpsdni.bpchapter.org)

### Mourning Star — Variety of Supports and Groups

(Adults and children services for when a child dies)

Locations in Victorville, Riverside, Murrieta and Banning

Contact: Pamela Gabbay (760) 773-6333

[mourningstar.org](http://mourningstar.org)

## Bakersfield/Kern County

### The Compassionate Friends: TCF of Bakersfield Support Groups

(661) 836-5649 or (661) 398-8539  
tcfofbakersfield@yahoo.com  
[thecompassionatefriends.org](http://thecompassionatefriends.org)

### Optimal Hospice Care Grief Support Group Kids Grief Connection

Bakersfield and other locations up to  
San Francisco and down to Frazier Park  
(661) 716-4000  
[optimalcares.com](http://optimalcares.com)

### Hoffmann Hospice — Variety of Grief Support

(Adults and children services)  
Bakersfield (661) 410-1010  
Lake Isabella (760) 379-4200  
[Hoffmannhospice.org](http://Hoffmannhospice.org)

## Lancaster/Antelope Valley

### The Compassionate Friends: TCF of Antelope Valley Support Groups

(Adults and children services for when a child dies)  
Lancaster (661) 839-2849  
Santa Clarita (661) 252-4054  
ouravangels@yahoo.com  
[thecompassionatefriends.org](http://thecompassionatefriends.org)

### Hoffmann Hospice — Variety of Grief Support

(Adults and children services)  
Palmdale (661) 272-2355  
[hoffmannhospice.org](http://hoffmannhospice.org)

### Antelope Valley Hospital — Pregnancy and Infant Loss Group

(Adults and children services for when a child dies)  
(661) 726-6517

### Pro Care Hospice — Support Groups

(Adults and children services)  
Lancaster (661) 951-1146  
Bakersfield (661) 864-0490

## San Diego County

### The Compassionate Friends: San Diego County Chapter

(Adults and children services for when a child dies)  
(619) 583-1555 or (619) 248-8022  
[sdpcf.org](http://sdpcf.org)  
[thecompassionatefriends.org](http://thecompassionatefriends.org)

### Empty Cradle — Infant Loss Group

(Adults and children services for when a child dies)  
(619) 595-3887  
[emptycradle.org](http://emptycradle.org)

### Families Helping Families — Variety of Supports

(619) 294-8000  
[jennadruckcenter.org](http://jennadruckcenter.org)

## Camarillo/Oxnard

### The Compassionate Friends of Ventura County CA Chapter Parent Grief Support Groups

(Adults and children services for when a child dies)  
Contact: Janice (805) 579-7065 / [gjanderson@sbcglobal.net](mailto:gjanderson@sbcglobal.net)  
or Lynn (805) 443-1905 / [lgarrety@yahoo.com](mailto:lgarrety@yahoo.com)  
[thecompassionatefriends.org](http://thecompassionatefriends.org)

### Camarillo Hospice (Enduring Hearts Group) — Parents' Grief

(805) 389-6870  
[camarillohospice.org](http://camarillohospice.org)

### Healing Hearts — Parent Grief Group

(Adults and children services for when a child dies)  
Contact: Debbie Morgan (805) 252-5922  
100 Day Road in Ventura  
Last Wednesday of every month at 6:30 pm at  
Ventura Tech High School Library



## Santa Barbara

### [Hospice of Santa Barbara — Variety of Support Groups](#)

(Adults and children services)  
(805) 563-8820  
[hospiceofsantabarbara.org](http://hospiceofsantabarbara.org)

### [Visiting Nurse & Hospice Care](#)

(Adults and children services)  
(805) 965-5555 — Spanish support available  
[vnhcsb.org/bereavement-support-counseling](http://vnhcsb.org/bereavement-support-counseling)

### [The Compassionate Friends of Ventura County CA Chapter](#)

(Adults and children services for when a child dies)  
Contact: Janice (805) 579-7065 / [gjanderson@sbcglobal.net](mailto:gjanderson@sbcglobal.net)  
or Lynn (805) 443-1905 / [lgarrety@yahoo.com](mailto:lgarrety@yahoo.com)  
[thecompassionatefriends.org](http://thecompassionatefriends.org)

## Merced/Stanislaus County

### [Jessica's House](#)

(Adults and children services)  
(209) 250-5395  
[jessicashouse@emanuelmed.org](mailto:jessicashouse@emanuelmed.org)

### [Bereaved Parents Support Hospice of Emanuel](#)

(209) 668-5283

### [Hanging Up Grief \(HUG\) — Ages 7-12](#)

Community Hospice in Modesto  
(209) 578-6378

## Modesto

### [The Compassionate Friends](#)

(Adults and children services for when a child dies)  
Contact: Rhonda (209) 622-6786  
[tcfmodesttorriverbank@gmail.com](mailto:tcfmodesttorriverbank@gmail.com)  
[thecompassionatefriends.org](http://thecompassionatefriends.org)

### [MISS Foundation – Pregnancy and Infant Loss](#)

(Adults and children services for when a child dies)  
Contact: Kim Lotz (209) 725-9241

## Educational materials and connection to other parents

### [Southern California Pregnancy and Infant Loss Center](#)

(Provides information regarding grief and loss and referrals to support groups in various geographic areas)  
Contact: Marcia Merry (909) 877-2777

### [Our House](#)

(Support groups for children who have lost a sibling)  
1663 Sawtelle Blvd., Suite 300, Los Angeles, CA 90025  
(310) 473-1511  
21860 Burbank Blvd., Suite 195, Woodland Hills, CA 91367  
(818) 222-3344

## More support resources

### Internet resources:

#### [Bereaved Parents of the USA](#)

[bereavedparentsusa.org](http://bereavedparentsusa.org)

#### [Griefnet.org](#)

[griefnet.org](http://griefnet.org)

#### [Hand.org](#)

[hand.org](http://hand.org)

#### [A Child in Grief](#)

[achildingrief.com](http://achildingrief.com)

### Camps for grief support:

#### [Camp Erin](#)

[moyerfoundation.org](http://moyerfoundation.org)

#### [Comfort Zone Camp](#)

[comfortzonecamp.org](http://comfortzonecamp.org)

*Disclaimer: UCLA Health does not recommend, endorse, sponsor, support, or have any affiliation with any of the agencies identified below. UCLA has not conducted any type of review or due diligence of these agencies and is only listing publically available contact information for your reference purposes only.*